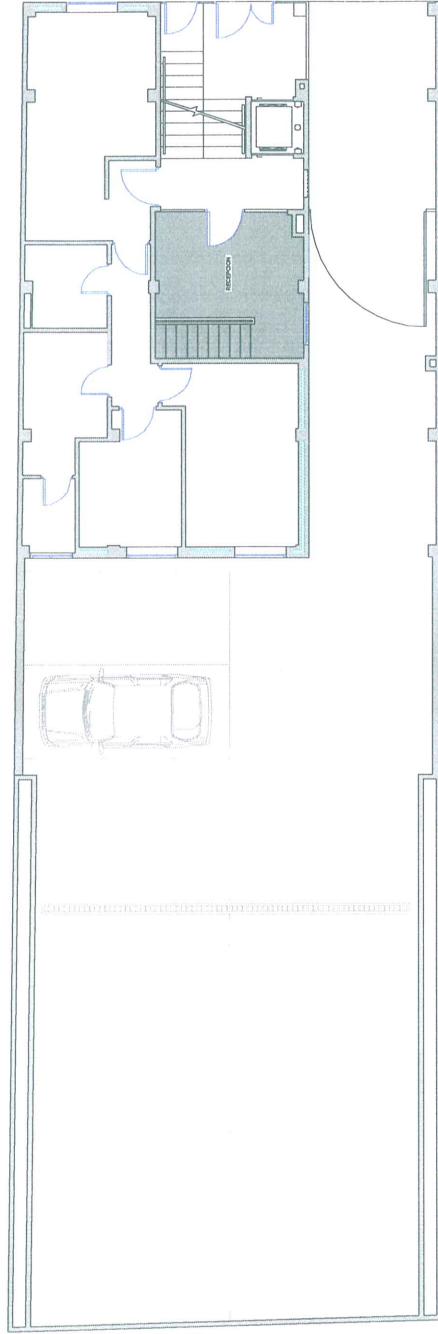
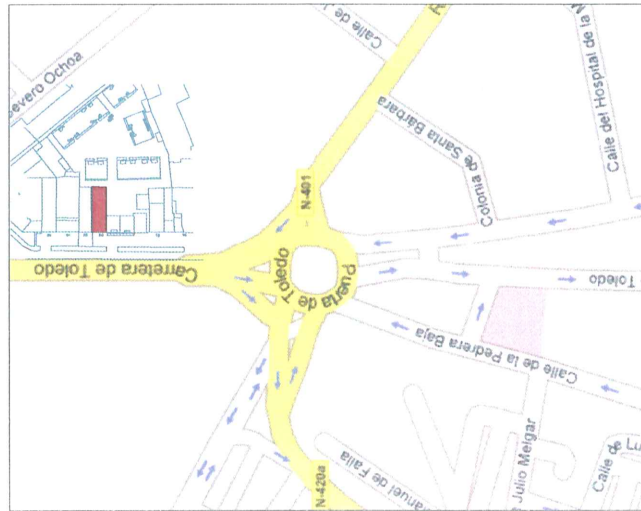


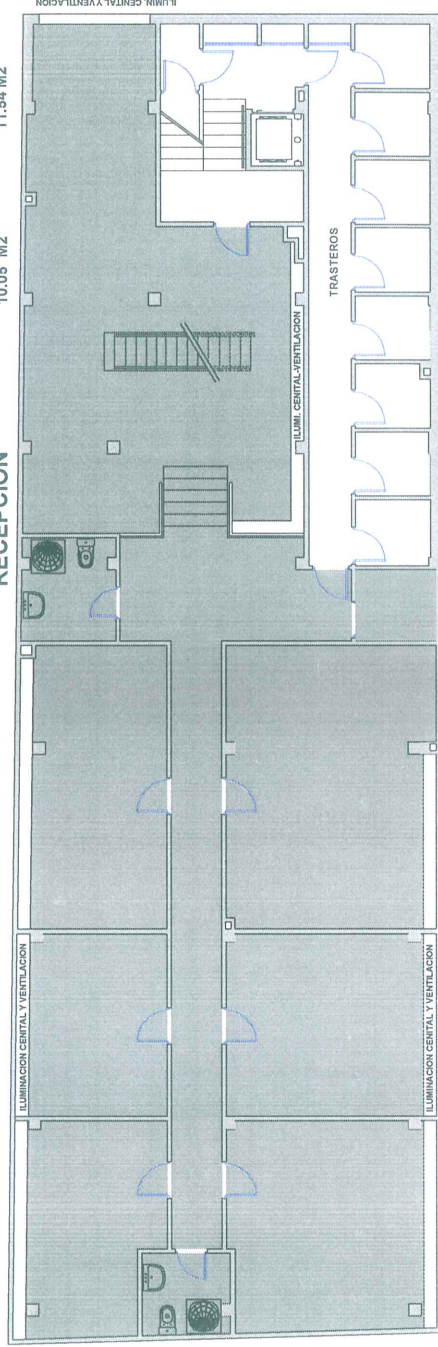
LOCAL PARA OFICINAS CRA. TOLEDO, 20- CIUDAD REAL



PLANTA BAJA

SUPERF. UTIL 10.05 M2
 SUP. CONSTRUIDA 11.54 M2

RECEPCION



PLANTA SEMISOTANO

SUPERF. UTIL 238.91 M2
 SUP. CONSTRUIDA 261.94M2

LA PRESENTE INFORMACION NO CONSTITUYE DOCUMENTO CONTRACTUAL

LOCAL